

**Redlined BSCP75 Registration of Meter Aggregation Rules for Volume Allocation Units changes for CP1356 Demand BM Unit Aggregation Rule Example for BSCP75**

The CP proposes changes to BSCP75: Insert 4.1.17 Demand BM Unit, into Appendix 4.1

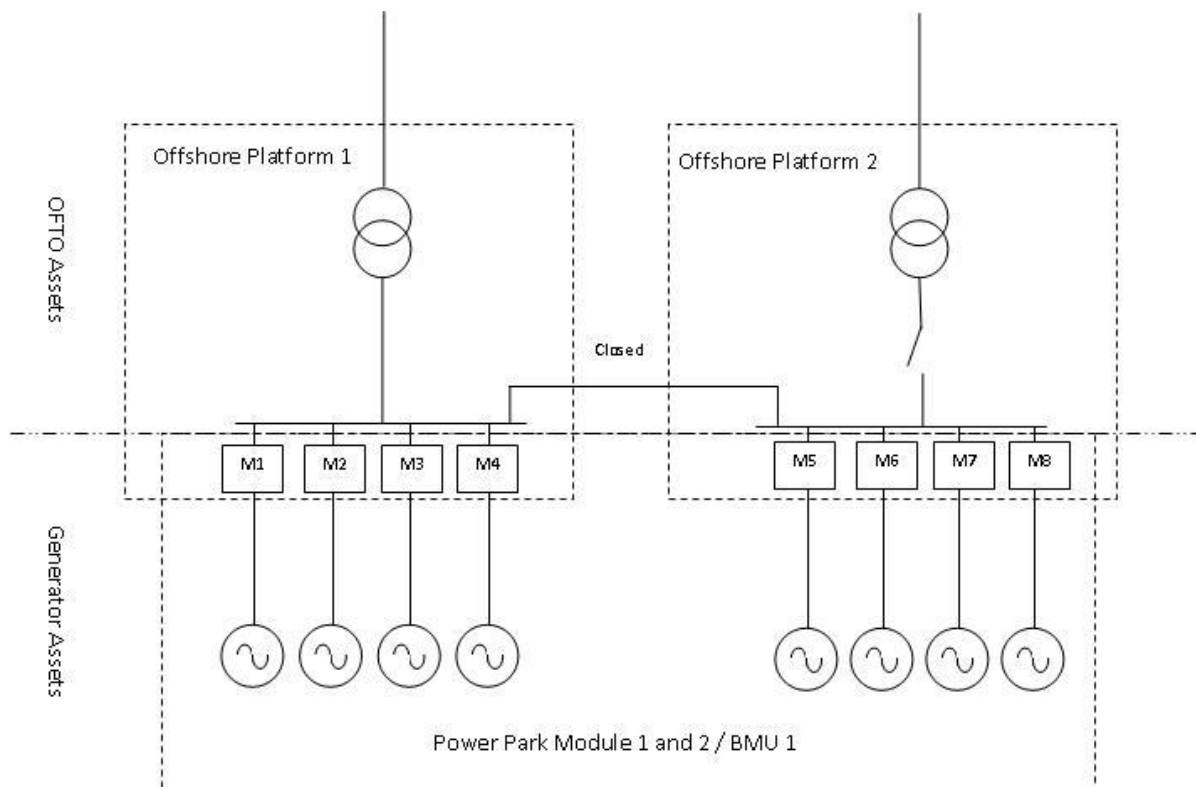
We have redlined these changes against version 12.0 of the BSCP.

4.1.16 Below are the same arrangements as in the example in section 4.1.15 except the offshore cable to platform 2 has been disconnected for maintenance purposes. The bus section switch has been closed so that the output from BM Unit 2 can be routed via BM Unit 1. In order to reflect the changes to the BM Unit configurations new aggregation rules are required. As the aggregation rules for this new arrangement have already been pre-submitted the Registrant has activated the alternative aggregation rules by submitting BSCP75/4.4 Form.

#### Aggregation Rules

BM Unit 1 = [1234.RED1.AE – 1234.RED1.AI] + [1234.RED2.AE – 1234.RED2.AI] +  
 [1234.RED3.AE – 1234.RED3.AI] + [1234.RED4.AE – 1234.RED4.AI] +  
 [1234.RED5.AE – 1234.RED5.AI] + [1234.RED6.AE – 1234.RED6.AI] +  
 [1234.RED7.AE – 1234.RED7.AI] + [1234.RED8.AE – 1234.RED8.AI].

BM Unit 2 = 0.



#### 4.1.17 Demand BM Unit

Below is a simplified example of a premises owned and operated by Star Company which is connected directly to the Transmission System. Since the premises has no on-site generation the Registrant wishes to register the premises as a single demand BM Unit (BM Unit 1). A Meter has been installed at the Boundary Point and has an integral Outstation which is registered in CMRS as a single Metering System with

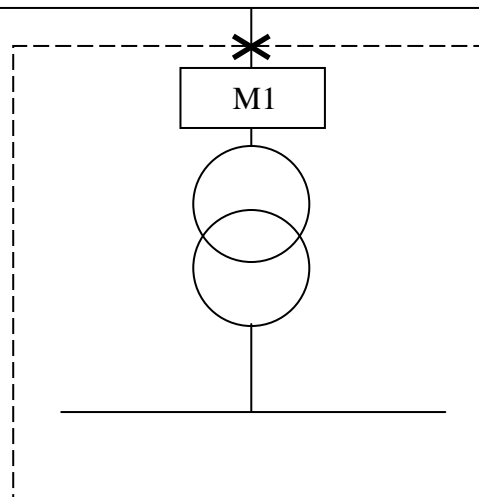
MSID 1234. The physical Meter (M1) is the metering subsystem referred to as STAR1.

For this example, one Aggregation Rule needs to be submitted to calculate the Metered Volumes associated with the demand BM Unit. Since there is no on-site generation the Active Energy Meter is only set up to record Active Import volumes (AI). Active Export (AE) is therefore zero in the Aggregation Rule. It should be noted that the zero (representing AE) must be accounted for in the Aggregation Rule in order to produce the correct sign (i.e. a negative Metered Volume) for the Metered Volumes for this BM Unit.

Aggregation Rule

BM Unit 1 = [0 – 1234.STAR1.AI]

New diagram inserted below



BM Unit 1